

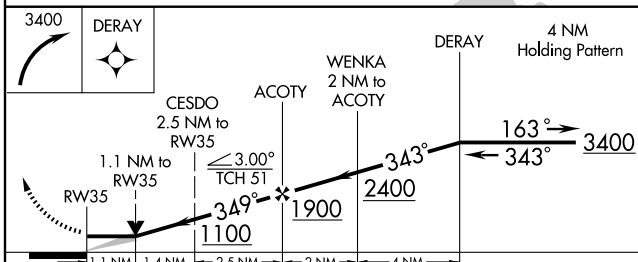
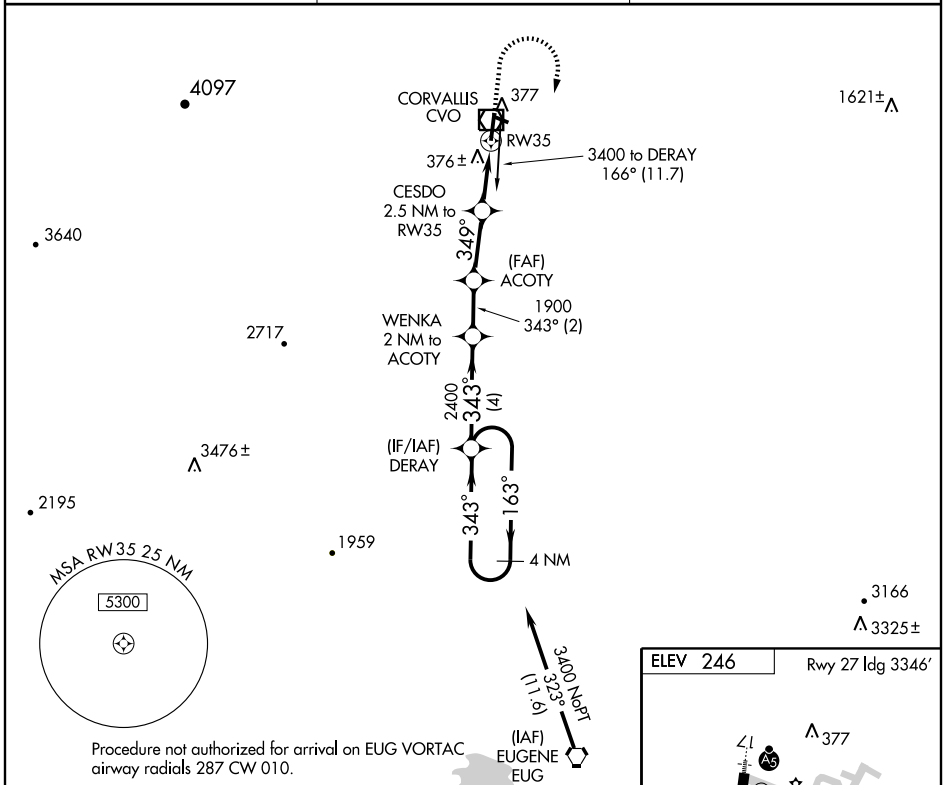
RNAV (GPS) RWY 35

CORVALLIS MUNI (CVO)

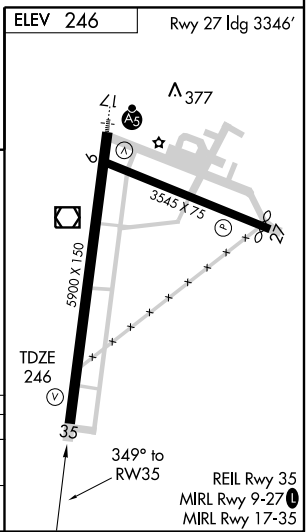
APP CRS	Rwy Idg	5900
349°	TDZE	246
	Apt Elev	246

NA GPS or RNP-0.3 required. DME/DME RNP-0.3 NA. MISSED APPROACH: Climbing right turn to 3400 direct DERAY WP and hold.

AWOS-3 135.775	CASCADE APP CON * 127.5 348.7	UNICOM 123.0 (CTAF)
--------------------------	---	-------------------------------



CATEGORY	A	B	C	D
LNVA MDA	660-1 414 (500-1)		660-1½ 414 (500-1½)	
CIRCLING	720-1 474 (500-1)		720-1½ 474 (500-1½)	840-2 594 (600-2)



NW-1, 22 OCT 2009 to 19 NOV 2009

NW-1, 22 OCT 2009 to 19 NOV 2009